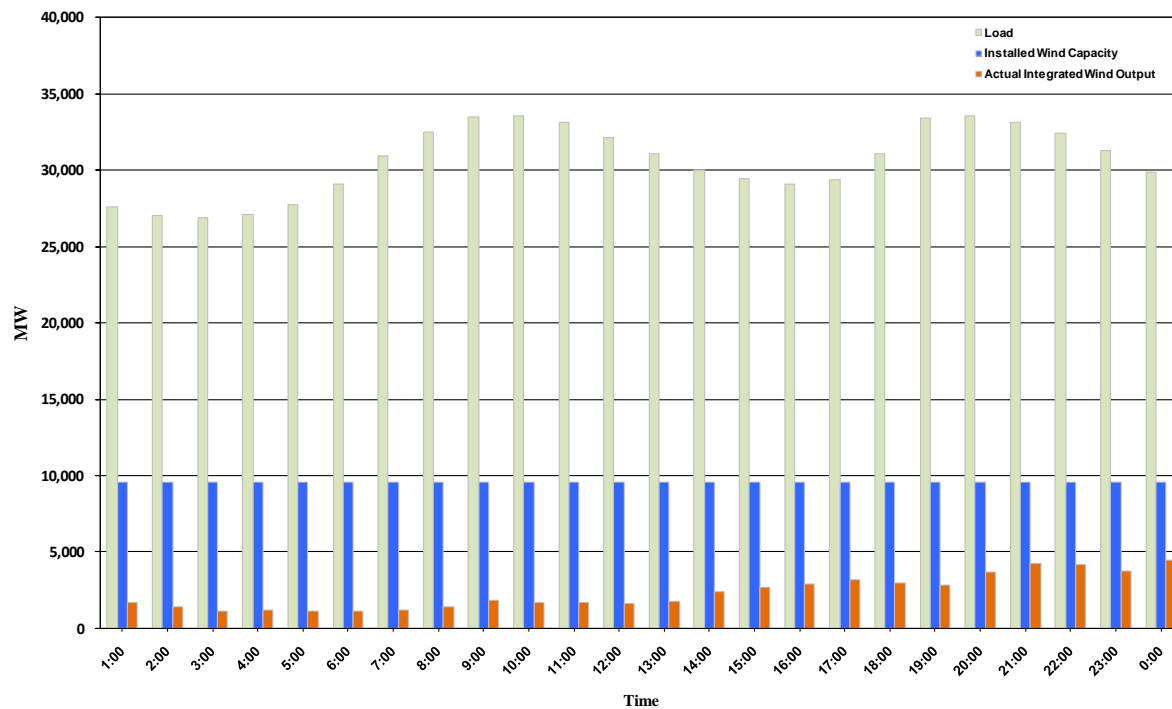




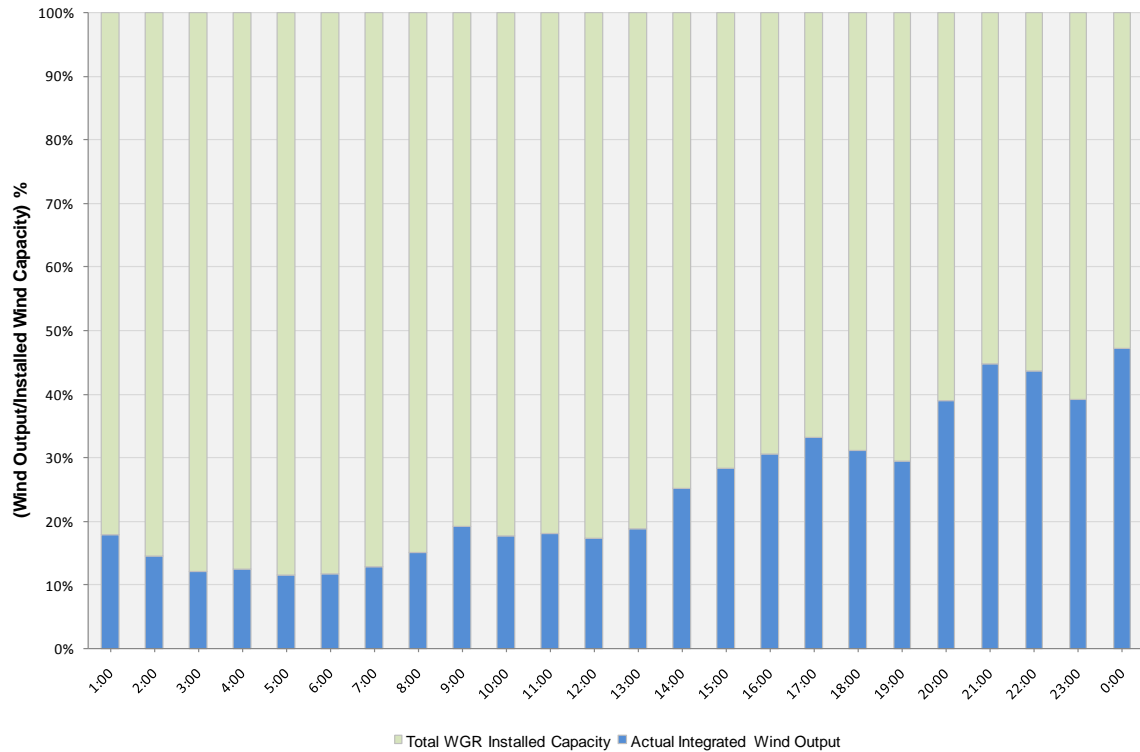
## ERCOT Grid Operations Wind Integration Report: 01/08/11

Peak Load	<b>33,548 MW</b>
Load Peak Hour	<b>10</b>
Wind Record 12/11/10	<b>7,227 MW</b>
Max Wind Value	<b>4,808 MW</b>
Wind Peak Hour	<b>23:59:56</b>
Wind Integration %	<b>16.42</b>

Hourly Average Actual Load vs. Actual Wind Output  
01-08-2011



**Actual Wind Output as a Percentage of the Total Installed Wind Capacity**  
**01-08-2011**



**Actual Wind Output as a Percentage of the ERCOT Load**  
**01-08-2011**

